



Installation

Installation of GreenPlan is a two step process as you need both a running SQL Server and the GreenPlan program itself.

Follow this guide to install both an appropriate version of SQL Server and GreenPlan.

1. SQL Server:

If you already have a version of SQL Server running, you can skip this step. GreenPlan is compatible with all SQL Server versions greater than 2005.

If you do not already have an appropriate SQL Server running, download and run the following installer.

https://greenplan-files.s3.eu-north-1.amazonaws.com/GartSQLInst_2012_64bit.exe

This will install and configure SQL Server Express 2012, a free version supplied by Microsoft.

2. Program and function libraries:

a. Create a folder for the program on your PC

This will be the install location of the GreenPlan program. This folder can be located anywhere on your own harddrive or a shared network drive - the suggested location is under the C:/ drive.

b. Download DLL files

Download the following zip file and unpack it into the newly created program folder.

https://greenplan-files.s3.eu-north-1.amazonaws.com/GreenSystem_Dlls_2016.zip

c. Download program files

Download the following zip file and unpack it into the newly created program folder.

<https://greenplan-files.s3.eu-north-1.amazonaws.com/GreenPlan.zip>

Note for Google Chrome users: As the zip file contains a .exe file, Chrome may flag the download as suspicious. It is safe to disregard this message.

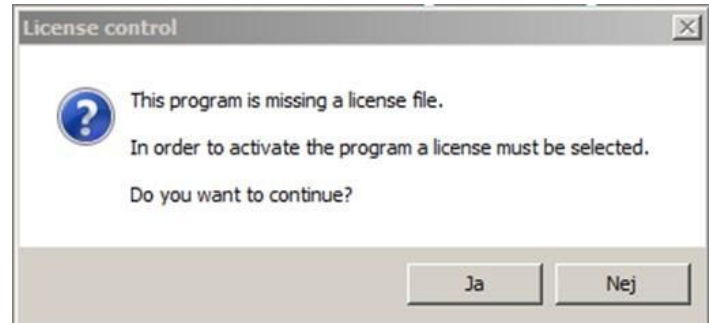


Installation

3. License registration:

The program license is sent separately to you. Copy this into the folder with the rest of the files.

If you have not yet received a license file, contact your GreenPlan representative.



4. Setup GreenPlan License

- a. Start the GreenPlan program by running GreenPlan.exe that you downloaded before.
- b. The program will prompt for a license file, answer yes to the dialog and browse to the location of the license file you put in the folder in step 3

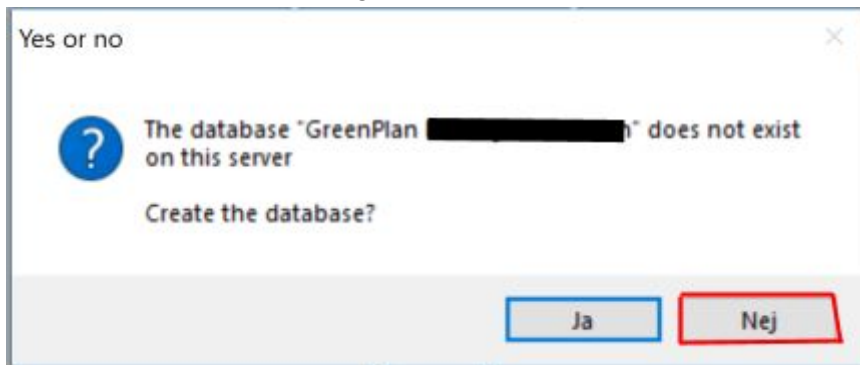


Installation

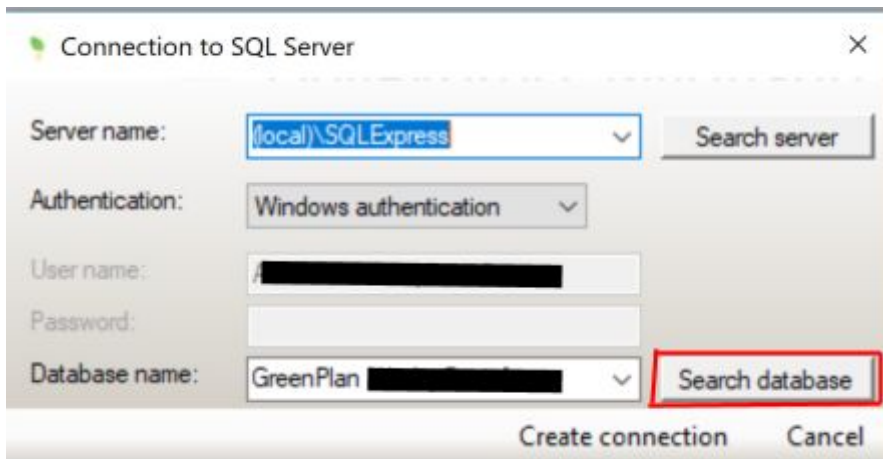
5. Setup GreenPlan Database

The program will now prompt you for a connection to a database

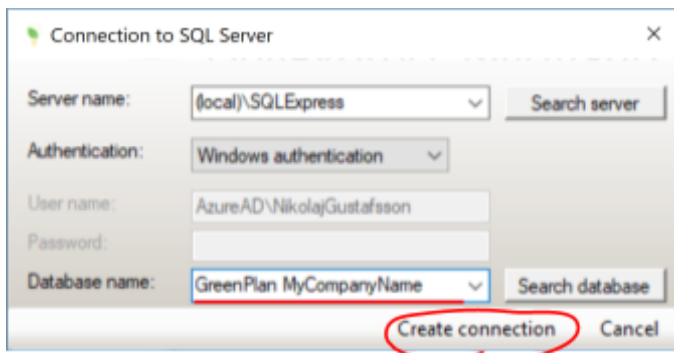
- a. Choose “No” in the following



- b. In the following menu, click Search Database (highlighted)



- c. Write a database name in the Database name field and then press “Create connection”.



This database name must be “GreenPlan” followed by the name of your company



Installation

- d. In the following dialogue, choose yes. The database will now be created. Database creation should take about 30 seconds. After that you are good to go.



Should you encounter any issues throughout this process, feel free to contact your GreenPlan representative.

